

Inspection Report (<input checked="" type="checkbox"/> 1ST <input type="checkbox"/> 2ND)		PENDING
<input checked="" type="checkbox"/> Pre-shipment <input type="checkbox"/> ON-LINE <input type="checkbox"/> IN PROCESS <input type="checkbox"/> FULL		
Summary Section		Service Number: F-QC2503261129116195
	ProductName	L20WheelLoader
	Itemnumber	L20
	P/Onumber	---
	Quantity	1set
	Clientname	---
	Suppliername	---
	Inspectiondate	2025-03-27
	Inspectionlocation	WeifangShandongChina

INSPECTOR

Inspector : Allen Dong	Inspector in factory / Inspector en la fabrica
Arrival time at the factory / Llegada a fabrica	Departure time from the factory / Salida de fabrica
9 : 20 AM	10 : 00 PM

Category	Con form		Comment
1. Quantity	<input checked="" type="checkbox"/> YES	<input type="checkbox"/> NO	
2. Product description / style / color	<input type="checkbox"/> YES	<input checked="" type="checkbox"/> NO	Special attention 1 2 3
3. Workmanship	<input checked="" type="checkbox"/> YES	<input type="checkbox"/> NO	
4. Testing/ checking	<input checked="" type="checkbox"/> YES	<input type="checkbox"/> NO	
5. Data measurement	<input type="checkbox"/> YES	<input checked="" type="checkbox"/> NO	Special attention 4-10
6. Packaging	<input type="checkbox"/> YES	<input checked="" type="checkbox"/> NO	Special attention 11
7. Marking	<input checked="" type="checkbox"/> YES	<input type="checkbox"/> NO	

OVERALL SUGGESTION	Pending
	Pending client review and approval

Special Attention
<ol style="list-style-type: none"> 1. TransmissionsystemTorqueconverter265PendingActualfoundthemodelis10. 2. Actualfound4-in-1bucketwithoutpainting, sotakephotosofthesamemodelproductsforcustomerreference. 3. BrakecaliperandBrakepadsnotready. 4. Overalldimension:5900x2100x2880mmPending Actualmeasured:4580x1850x2980mm. 5. Maximumdumpheight3450mmPending Actual3220mm 6. Minimumturningradius3400mmPendingActualmeasured4500+4100=8600/2=4300mm 7. Minimumgroundclearance400mmPending Actualmeasured300mm 8. Wheelbase2450mmPending Actualmeasured2540MM 9. Wheeltread1750mmPendingActualmeasured1500mm 10. Operating weight 5610kg Pending Actual 6030kg 11. Actual found the product without packing.
Defectiveproducts <input type="checkbox"/> pickout <input type="checkbox"/> replace <input checked="" type="checkbox"/> rework

DETAILS

I. Quantity

Item Number	Ordered Quantity	Total carton	Packed Quantity	Finished quantity	Not finished quantity	Sample from packed Qty.	Sam ple from Not packed Qty.
L20 Wheel Loader	1	0	0	1	1	0	1

II. Product description / style / color

1. Product description

	
Product view	Product view



Product view



Product view



Product view



Product view



Product view



Product view



Product view



Product view



Product view



Product view



Product view



Product view



Product view



Product view



Product view



Product view



Product view



Product view



Product view



Product view



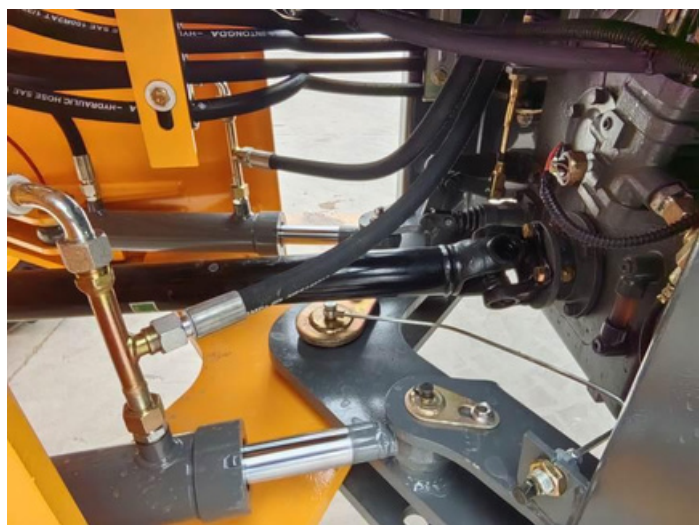
Product view



Product view



Product view



Product view



Product view



Product view



Product view



Product view



Quick hitch is OK



Product view



Product view



Product view



Product view



Product view



Product view



Product view



Product view



Product view



Product view



Product view



Product view



Product view



Product view



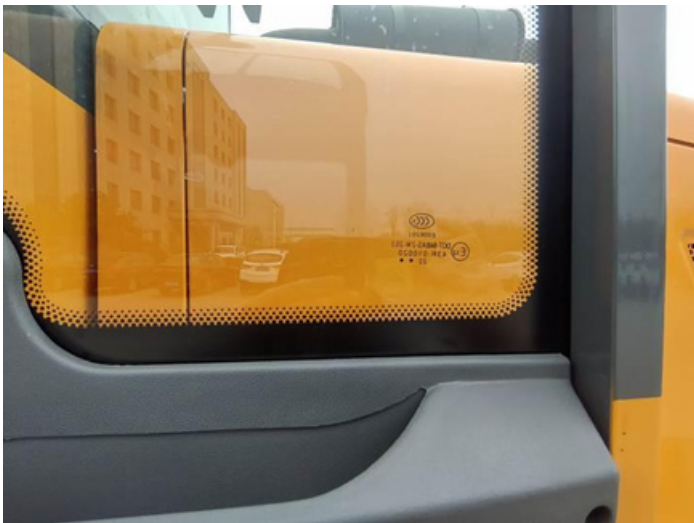
Product view



AC is OK



AC is OK



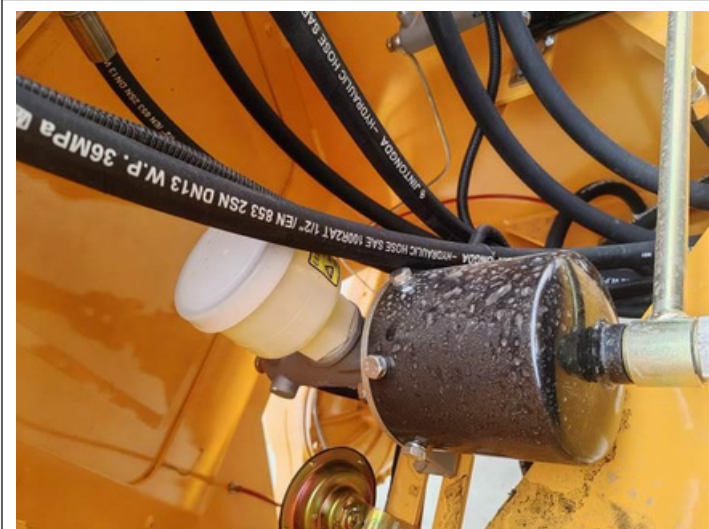
Product view



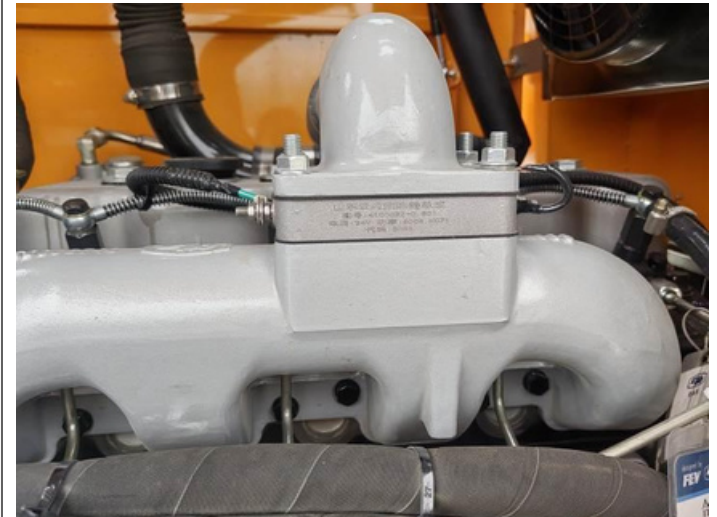
Product view



4-IN-1 Bucket waiting for painting



Brake system is OK



Engine China yunnei YN 38GBZ,76kw is OK



Gear shift 4 forward shift 4 reverse shift is ok



Pilot control is OK





Tyre 16 70-24 is ok
Extra Spare Part



Starter



Alternator



Air compressor



Fan

Fan belt



Supercharger



Oil filter element



Diesel filter element



Air filter element



16/70-24 tyre



Pin

Not available

Brake caliper

Not available

Brake pads



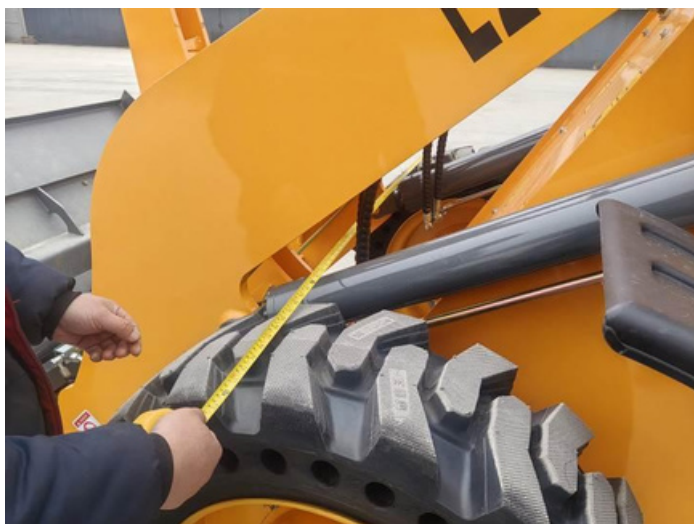
Bucket teech, attachment plate side edge+bolt with screw cap Air booster pump

2. Dimensions

Overall dimension:5900x2100x2880mm **Pending** Actual measured:4580x1850x2980mm



Length:4400+100+80=4580mm



W idth:1850m m



Height:2980mm



Maximum dump height 3450mm **Pending** Actual 3220mm



Maximum dump reach:1200mm OK





Minimum turning radius 3400mm **Pending** Actual measured $4500+4100=8600/2=4300\text{mm}$



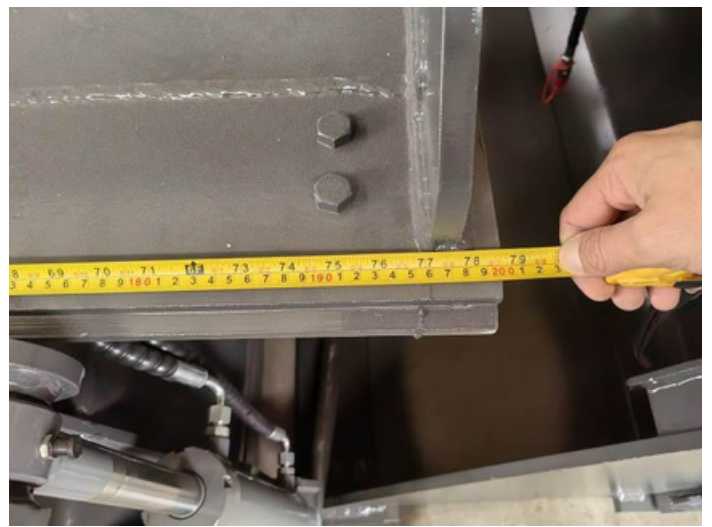
Minimum ground clearance 400mm **Pending** Actual measured 300mm



Wheel base 2450mm **Pending** Actual measured 2540MM



Wheel tread 1750mm **Pending** Actual measured 1500mm





Rated bucket capacity 1M³ ok



Operating weight 5610kg **Pending Actual 6030kg**

III. Workmanship

Inspection Standard: ANSI/ASQZ1.4 (MIL-STD-105E)		DEFE CT S		
		Critical	Major	Minor
Sampling plan: Single, Normal	AQL	0.0	2.5	4.0
Inspection Level: II	Defects Found:	0	0	1
SampleSize: 1	Max. Allowed:	/	/	/

Defectives List			
Defectives Description	CRI	MAJ	MIN
1. Scratchmark	0	0	1

Defectives PIC	
	Nil
Scratch mark	Nil

IV. TESTING /CHECKING

Inspection Standard: ANSI/ASQZ1.4 (MIL-STD-105E)				DEFECTS			
Sampling plan: Single, Normal				AQL	0	0.65	1.5
InspectionLevel:	S-4	SampleSize:	20	Max. Allowed:	0	0	1

TESTING/CHECKING							
NO	testitem	Insp Level	Sample	CRI	MAJ	MIN	Conclusion
1.	Drivingfunctiontest	--	1	0	0		PASS
2.	Loadingandunloadingfunctiontest	--	1	0	0		PASS
3.	Ratedloadingtest	--	1	0	0		PASS
4.	ACfunctiontest	--	1	0	0		PASS
5.	Internalcheck	--	1	0	1		PENDING

Pictures & instructions

Driving function test



Loading and unloading function test



Rated loading test





AC function test



Internal check



Transmission system Torque converter 265 Pending Actual found the model is 10

V. Data measurement

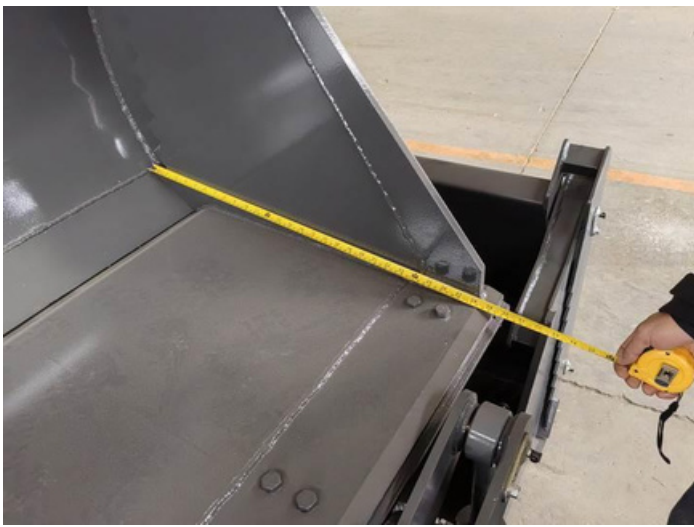
List of test data

Item	Contract requirements	Measured data
Product size	5900x2100x2880mm	4580x1850x2980mm
Product weight	5610kg	6030kg

Pictures & instructions

Overall dimension:5900x2100x2880mm Pending Actual measured:4580x1850x2980mm





Length:4400+100+80=4580mm



W idth:1850m m



Height:2980mm



Operating weight 5610kg **Pending Actual 6030kg**

VI. PACKING

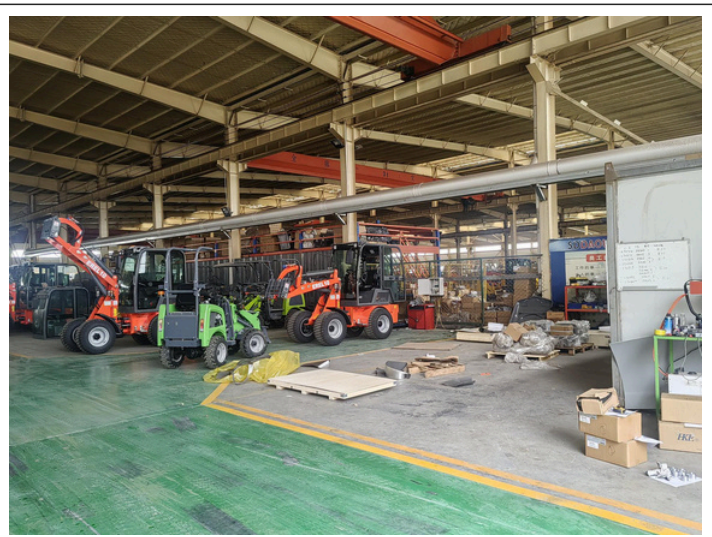
PACKING	No packing
N/A	N/A

VII. MARKING

SHIPPING MARK	No shipping mark
N/A	N/A

Cartons	No cartons
N/A	N/A

Inspection spot



OTHER PIC	
	
Factory gate	Factory gate



Note: This report reflects our findings at time and place of inspection. This report does not relieve suppliers from their contractual liabilities or prejudice buyers' right for compensation for any apparent and/or hidden defects not detected during our random inspection or occurring thereafter.

-----END OF REPORT-----